

MEET OUR STAFF

10.30AM - 2.30PM

Meet our staff from Visual Arts, Design and Art History & Curatorship, chat to them about our programs and courses, and learn more about undergraduate and postgraduate study options.

- *Information tables - outside next to the School of Art & Design Library*

PORTFOLIO REVIEWS

10.00AM - 2.30PM

Have your portfolio reviewed by our staff.

- *Register for a time on our website.*
<http://soad.cass.anu.edu.au>

ANU OPEN DAY 2019

SATURDAY 31 AUGUST
9AM - 4PM

SCHOOL OF ART & DESIGN
10.30AM - 2.30PM

- Download the App!
ANU Open Day 2019

WHAT'S ON IN THE SCHOOL

11AM - 1PM

Drop in Indigo Dye Workshop

Bring an item of clothing, or pick up items & fabric we supply and see it transformed through the indigo dyeing process!

- *Dye Lab, Textiles*

11.30AM

Bronze Casting Demonstration

Watch the transforming process of bronze casting.

- *The Foundry, Sculpture & Spatial Practice*

Digital 3D Clay Printing Demonstration

Rod Bamford and Mitchell Whitelaw will give a short presentation on how new digital tools are combining with traditional practices to create exciting new opportunities in art and design practice.

- *Ceramics*

10.30AM - 2.30PM

Ceramic Wheel Throwing

Make your own ceramic pot with Lecturer Joanne Searle.

- *Throwing Room, Ceramics*

Glass Blowing

See students in action in the hotshop!

- *Hot Shop, Glass*

Screenprint your own poster

Screen print your own #ClimateStrike Poster and be ready for September 20 World Climate Strike.

- *Screenprinting, Printmedia & Drawing*

Watch famous environmental quotes roll off the Graphix letterpress printer.

- *Book Studio, Printmedia & Drawing*

Broadcasting Print

See printing in action & chat with current students.

- *Printmedia & Drawing*

Socially Engaged Art Practice

Be socially engaged and motivated by creating stencil prints, banners & puppets to evoke change with Socially Engaged Art Practice Class.

- *Outside Sculpture & Spatial Practice*

TOURS OF THE SCHOOL

10.30AM / 12.30PM / 1.30PM

Join our staff for a guided tour of the School of Art & Design. Find out more about our facilities, see our workshop spaces in action and chat to our friendly staff along the way.

Tour times: 10:30am - 11.30am
12.30pm - 1.30pm
1.30pm - 2.30pm

- *Meet outside next to the School of Art & Design Library.*

EXHIBITIONS

10.30AM - 2.30PM

Higher Degree Research Exhibition
Mel Douglas & Garry Jones

- *School of Art & Design Gallery*

GEO: Art of the Collection

- *PROJECT SPACE*

NECKS: Wearable works from the necks of Canberra.
Local, National & International Makers

- *Jewellery & Object*

Student exhibitions & work on display in:

- *Ceramics*
- *Glass*
- *Painting*
- *Photography & Media Arts*
- *Printmedia & Drawing*
- *Sculpture & Spatial Practice*
- *Textiles*



@anuartdesign



ANU School of Art & Design

ANU School of Art & Design

General

- 1 Administration
- 2 Lecture Theatre
- 3 Art & Music Library
- 4 Lift
- 5 Café
- 6 SoA&D Gallery
- 7 Project Space
- 8 Photospace
- 9 Room 1.10
- 10 Room 1.29

Facilities

- 11 Toilets
- 12 Parents Room

Disciplines

- 13 Animation & Video
- 14 Ceramics
- 15 Design
- 16 Foundation
- 17 Furniture
- 18 Glass
- 19 Jewellery & Object
- 20 Painting
- 21 Photography & Media Arts
- 22 Printmedia & Drawing
- 23 Sculpture & Spatial Practice
- 24 Textiles

Centre for Art Theory & Art History

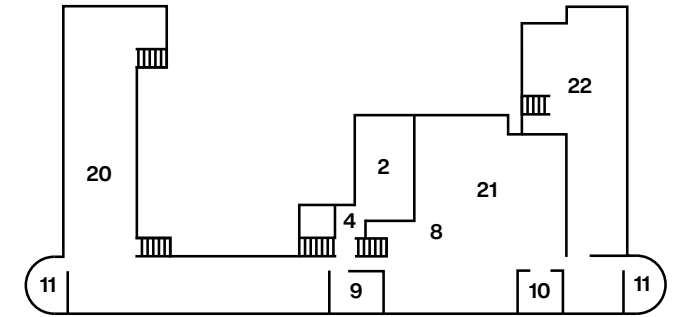
Located within Sir Roland Wilson Building, McCoy Circuit.
Exit School of Art & Design via Ellery Crescent. Sir Roland Wilson
Building is located opposite the National Film & Sound Archive.



Australian
National
University

soad.cass.anu.edu.au

Level 1



Ground Level

