

The Magic Lantern in Australia and the World

A collaborative conference between the National Film and Sound Archive and the Australian National University.

Part of the Australian Research Council Discovery Project *Heritage in the Limelight: The Magic Lantern in Australia and the World*.

136 people from 6 countries saw 34 papers and 8 performances & creative works over 3 days & nights, 4 - 6 September 2018.



Conference participants at the conclusion of the final evening of performances.



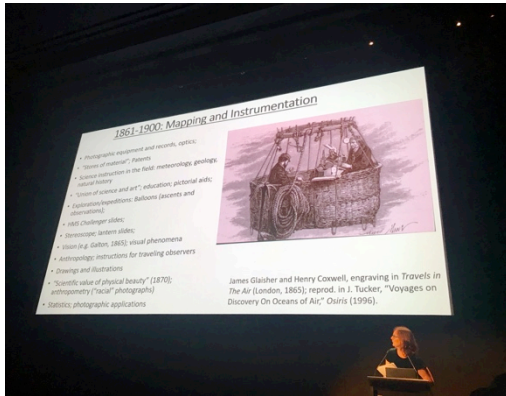
ARC Cinema, NFSA. Keynote performer William Yang performs a show charting his own development as an artist using projection in, *A Story Only I Can Tell*.



Keynote speaker Dr Vanessa Agnew,
University Duisburg Essen, with Professor
Paul Pickering, ANU.



ARC Cinema, NFSA. Dr Nicholas Ng and William Yang take a bow.



ARC Cinema, NFSA. Keynote speaker
Associate Professor Jennifer Tucker, Wesleyan
University.



ARC Cinema, NFSA. David Donaldson discusses the film, *Reg Perry Remembers*, 1976.



ARC Cinema, NFSA. Keynote performer
William Yang.



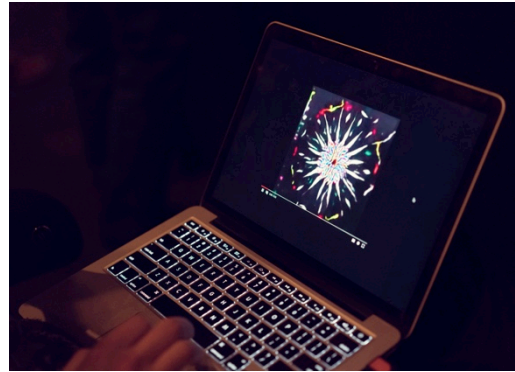
ARC Cinema, NFSA. Dr Jenny Gall introduces Margaret Bergh and Nancy Stewart, USA, *Picture the Songs: The Life Model Illustrated Song in Australia*.



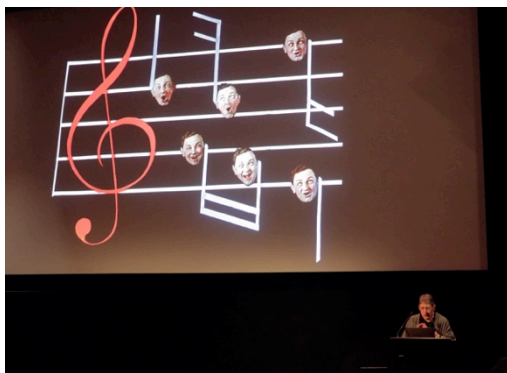
ARC Cinema, NFSA. Dr Nicholas Ng accompanies William Yang.



ARC Cinema, NFSA. Nancy Stewart accompanies Margaret Bergh for *Picture the Songs*.



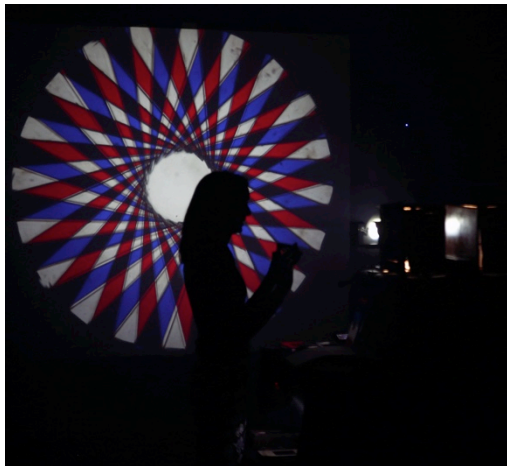
ARC Cinema, NFSA. Computer scientist Kieran Browne demonstrates his AI chromatrope.



ARC Cinema, NFSA. Margaret Bergh performs *Picture the Songs*.



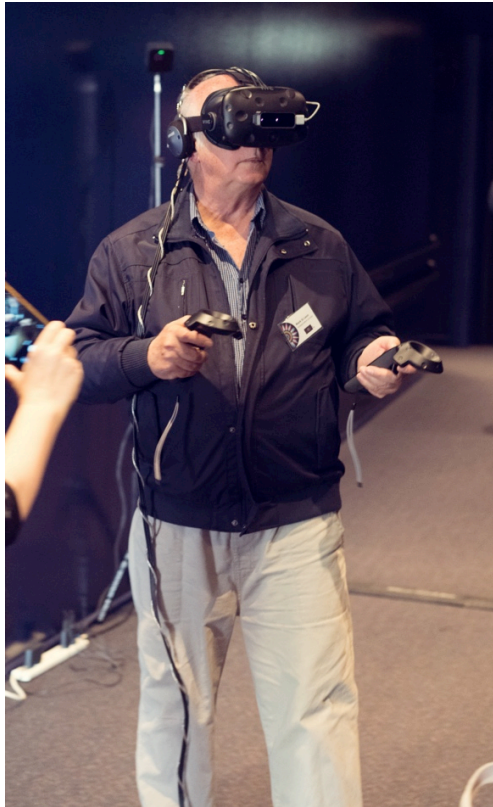
ARC Cinema, NFSA. Conference participant 'dissolves' two of Dr Waratah Lahy's original hand-painted magic lantern slides.



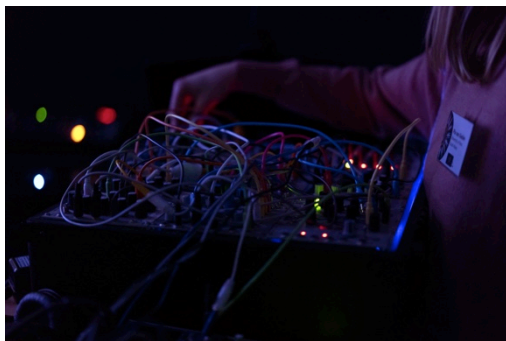
ARC Cinema, NFSA. Elisa deCourcy demonstrates a twenty-first century chromatrope, algorithmically coded by computer scientist Kieran Browne and built with laser cut acrylic by engineer Miheng Dong.



ARC Cinema, NFSA. Virtual Reality work, *Shards*, by Stephanie Andrews, RMIT.



ARC Cinema, NFSA. Virtual Reality work, *Shards*, by Stephanie Andrews, RMIT.



Pia van Gelder performs on an analogue video synthesizer.



ARC Cinema, NFSA. Jenny Gall, NFSA; Jan Brazier, Macleay Museum; Holly Schulte, Sydney Living Museums; Lindsay Cox, Salvation Army Heritage Centre; Victoria Riddell, Trove, (NLA); Karen Kindt, Queensland Museum; and David Jeffrey,

AIATSIS, discuss the magic lantern slides in their collections.



Dr Elisa deCourcy, Associate Professor Martyn Jolly, Dr Alexander Hunter and Karen Vickery perform *Five Scenes for a Modern Prometheus* on original magic lanterns with original magic lantern slides.



Performing *Five Scenes for a Modern Prometheus*.



Some of the hand-painted slides used in *Five Scenes for a Modern Prometheus*



Participants discuss the slides.



Martyn Jolly discusses the conference with responder Professor Ross Gibson.



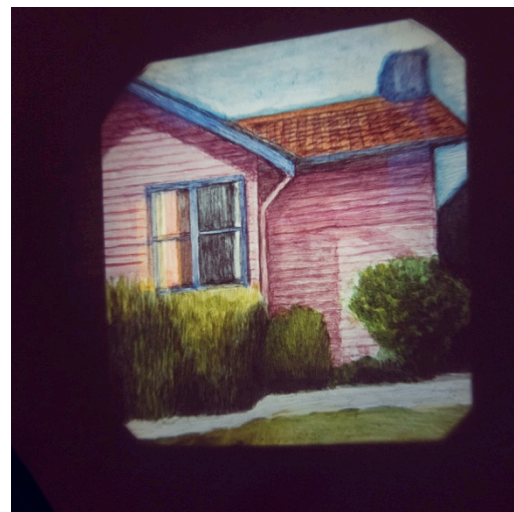
ARC Cinema, NFSA. Elisa deCourcy and Martyn Jolly demonstrate the dissolving mechanism for participants.



ARC Cinema, NFSA. Computer scientist Kieran Browne explains his algorithmically generated and laser cut chromatropes.



ARC Cinema, NFSA. A participant interacts with a pair of 'dissolving view' magic lanterns.



ARC Cinema, NFSA. Two freshly painted 'dissolving view' slides, made by contemporary artist Dr Waratah Lahy, of sunset at her childhood home in Cooma, NSW, partway through a dissolve in a pair of 1880s Steward magic lanterns.



ARC Cinema, NFSA. Martyn Jolly demonstrates a chromatrope.

Press Release

In September 2018, 136 people attended the conference *The Magic Lantern in Australia and the World*, a collaboration between the Australian National University Research School of Humanities and the Arts and Humanities Research Centre, and the National Film and Sound Archive, Australia, as part of the Australian Research Council Discovery Project *Heritage in the Limelight*.

(<http://soad.cass.anu.edu.au/research/heritage-limelight>)

Participants came from six countries and saw thirty-four papers and eight performances. Themes covered by the papers included: Old and New Media; Exploration and Travel; Science, Instruction and Education; Moral Movements, Missionaries and Evangelism; and Biography. A highlight was an extended session at the National Film and Sound Archive where curators from eight different Australian institutions explored the magic lantern material in their collections. Keynote papers by Dr Vanessa Agnew, from Germany, and Associate professor Jennifer Tucker, from the USA, provided an international context through their focuses on the magic lantern and political witnessing, and the magic lantern and scientific education.

An important part of the conference was a series of performances and creative works over three nights. These included the projection, in magic lanterns, of an algorithmically coded and laser cut chromatope made by computer scientist Kieran Browne and engineer Miheng Dong, and a new set of dissolving view slides painted by contemporary artist Dr Waratah Lahy, which beautifully portrayed dusk at her childhood home in Cooma, New South Wales. Margaret Bergh and pianist Nancy Stewart from the USA presented a performance *Picture the Songs: The Life Model Illustrated Song in Australia*, which used Australia's online newspaper archive *Trove*, to track the use of American illustrated song slides through Australian halls and theatres in the first part of the twentieth century. Dr Elisa deCourcy and Associate Professor Martyn Jolly, in collaboration with composer Alexander Hunter and actor Karen Vickery presented a magic lantern performance *Five Scenes for a Modern Prometheus*, in celebration of the two-hundredth anniversary of Mary Shelly's *Frankenstein*. It used a pair of dissolving view lanterns to project over sixty slides, including mechanical comic slides, hand painted panoramic slides, and twentieth century scientific slides. The well-known theatre maker William Yang and the musician Dr Nicholas Ng performed *A Story Only I Can Tell*, which thoughtfully reprised his thirty-year career accompanying slide shows of his photographs with moving monologues.

Magic Lantern Society members who contributed to the conference included Margaret Bergh (USA), Joe Kember (UK), John Hyett (Australia), Martyn Jolly (Australia), David Donaldson (Australia) and Evelien Jonckheere (University of Antwerp)

For further information contact:

<http://soad.cass.anu.edu.au/research/heritage-limelight>

martyn.jolly@anu.edu.au

elisa.decourcy@anu.edu.au

PRESENTERS

Papers

Dr Vanessa Agnew, Universität Duisburg-Essen
Geoffrey Barker, State Library of New South Wales
Dr Catherine Bishop, University of Sydney
Jan Brazier, MacLachlan Museum, University of Sydney
Emma-Clare Bussell, Kerry Stokes Collection
Dr Martin Bush, University of Melbourne
Matthew Churchward, Museums Victoria
Jane Clark, Museum of Old and New Art
Lindsay Cox, Salvation Army Heritage Centre, Melbourne
Dr Elisa deCourcy, Australian National University
Laura Dunham, University of Canterbury
Daniel Eisenberg, Australian War Memorial
Deirdre Feeney, Australian National University
Vanessa Finney, Australian Museum
Dr Jenny Gall, National Film and Sound Archive
Professor Ross Gibson, University of Canberra
Dr Keren Hammerschlag, Georgetown University & Australian National University
Chris Handran, Queensland University of Technology
Shaun Higgins, Auckland War Memorial Museum | Tamaki Paenga Hira
John Hyett, Magic Lantern Society, Australia
Lorenzo Iozzi, Museums Victoria
David Jeffery, The Australian Institute of Aboriginal and Torres Strait Islander Studies
Associate Professor Martyn Jolly, Australian National University
Dr Evelien Jonckheere, University of Antwerp
Associate Professor Joe Kember, University of Exeter
Karen Kindt, Queensland Museum
Professor Hannah Lewi, University of Melbourne
Professor Jane Lydon, University of Western Australia
Kate Morschel, National Museum of Australia & Australian War Memorial
Professor Nicolas Peterson, Australian National University
Victoria Riddell, National Library of Australia
Eric Riddler, Art Gallery of New South Wales
Holly Schulte, Sydney Living Museums
Associate Professor Martin Thomas, Australian National University
Associate Professor Jennifer Tucker, Wesleyan University, Connecticut
Pia van Gelder, University of New South Wales
Associate Professor Richard White, University of Sydney

Performances and Creative Works

Stephanie Andrews, RMIT University
Margaret Bergh, Magic Lantern Society of the United States and Canada
Kieran Browne, Australian National University
Dr Elisa deCourcy, Australian National University
David Donaldson, Filmart Associates, Adelaide
Miheng Dong, Australian National University
Pia Van Gelder, University of New South Wales

Associate Professor Martyn Jolly, Australian National University
Dr Waratah Lahy, Australian National University
Dr Alec Hunter, Australian National University
Dr Nicholas Ng, University of Sydney
Nancy Stewart, Magic Lantern Society of the United States and Canada
Karen Vickery, National Portrait Gallery, Pigeonhole Theatre
William Yang, independent artist
